




**DYNAMIC  
PROJECT  
SERVICES**

# REMEDIAL SOLUTIONS



**FULL BUILDERS LICENCE**  
NSW | VIC | SA | QLD



A thick orange line that starts horizontally from the left, then angles upwards to a peak, and finally angles downwards to the right.

# ABOUT US

A thick horizontal orange line spanning the width of the page.

# DISCOVER DYNAMIC PROJECT SERVICES

At Dynamic Project Services, we bring over 30 years of building expertise and experience to remedial projects.

## FULL BUILDERS LICENCE, NSW, VIC, SA, QLD



NEW SOUTH WALES  
#347675C



SOUTH AUSTRALIA  
#BLD 306513



VICTORIA  
#CCB-L 69366



QUEENSLAND  
#15239142

For Commercial, Institutional, Strata and Government facilities across the eastern seaboard of Australia, we design holistic building solutions, source quality tradespeople, efficiently manage projects, and deliver defect-free projects.

After operating in the building and construction industry for decades, it was evident that there were very few building contract managers who could handle the challenging requirements and complex demands of a multi-disciplinary project effectively. To meet this critical industry limitation, Dynamic was born.

Dynamic Project Services can adapt to the unique needs of each project – whether it involves a complex or straightforward scope of services.

## COMPLIANCE WITH



# WHY CHOOSE DYNAMIC?

We believe in delivering defect-free project outcomes that will stand the test of time for quality, functionality, and durability. That's our promise to every client!



## **BUILDING EXPERTS**

Qualified. Licensed. Skilled. Experienced. DPS is the gold standard in remedial building solutions, with superior performance across all four attributes.



## **SINGLE SERVICE PROVIDER**

Eliminate the hassle of sourcing different service providers and tradespeople for each task. DPS will provide a turn key solution to deliver the whole project.



## **DIRECT-FREE WORKMANSHIP**

We're confident that there won't be a need for a backup plan because we'll complete the job to a standard that exceeds your expectations.



## **UNCOMPROMISING SOLUTIONS**

Without compromise, DPS puts your best interests first. We think beyond the short-term and recommend long-term solutions to your problems.



## **SUPERIOR SITE SAFETY & PRESENCE**

DPS takes great pride in the safety of every building site - strict safety procedures and guidelines ensure everyone is protected from harm's way.

# OUR 4-STEP PROCESS

Dynamic Project Services offers a comprehensive four-step process to give your building the transformation it desperately needs and deserves.

## INSURANCE & PUBLIC LIABILITY



TRUST ABN  
**40 198 640 620**

TRUSTEE ACN  
**623 483 045**



**DESIGN**  
Holistic Solutions



**SOURCE**  
Quality Tradespeople



**MANAGE**  
Entire Projects Efficiently



**DELIVER**  
Defect-Free Project Outcomes

# OUR GROWING TEAM IS LEAD BY

## Bryan Ball

National Operations  
Manager and Director

Bryan sets the benchmark for quality at Dynamic with a long list of qualifications, licenses and over three decades of hands on experience. He is passionate about gaining a deep understanding of his client's needs to ensure he delivers a remarkable service that leaves them saying, "Wow".

## Blaine Rico

Project Manager

Blaine is a highly valued asset at Dynamic, bringing a new level of excellence in project management to the team. Blaine has an impressive ability to manage projects to completion – sticking within the budget and timeline to ensure exceptional standards in project delivery outcomes.



# CLIENTS, SUPPLIERS & ASSOCIATES

## OUR CLIENTS



## OUR SUPPLIERS



## OUR ASSOCIATES



A thick orange line that starts horizontally from the left, then angles upwards to a peak, and finally angles downwards to the right.

# OUR SERVICES

A thick horizontal orange line at the bottom of the page.



# SKILLS IN THE TOOLBOX

Whether your building needs just one specialty service or ALL of them; our professional capabilities include but not limited to:



**SPECIALIST & PROTECTIVE PAINTING**



**GLASS & GLAZING**



**BUILDING & CONSTRUCTION**



**TILES & FLOORING**



**PLUMBING & ELECTRICAL**



**CLADDING, RENDER & FACADES**



**WINDOWS, WALLS & DOORS**



**CONCRETE, JOINTS & BRICKWORK**



**ROOFING & GUTTERS**



**WATER INGRESS & WATERPROOFING**



**BALCONIES & BALUSTRADES**



**RETAINING WALLS & FENCING**



**HEATING, VENTILATION & AC**

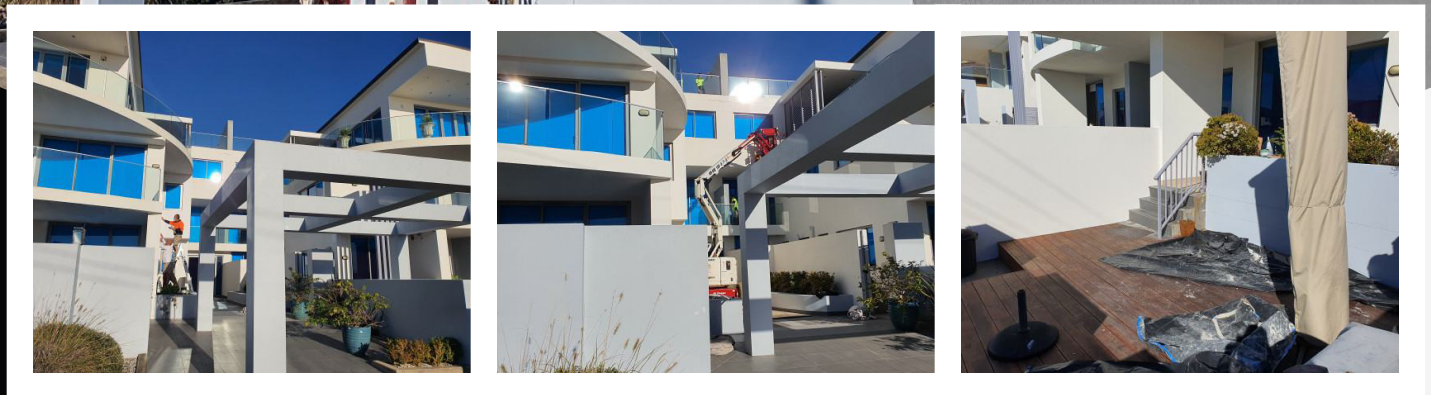


**CORROSION & RUST TREATMENT**

A thick orange line that starts horizontally from the left, then rises to a peak in the center, and then descends to the right.

# OUR HIGHLIGHTS

A thick horizontal orange line at the bottom of the page.



## OCEAN PARADE, THE ENTRANCE

Building Restoration

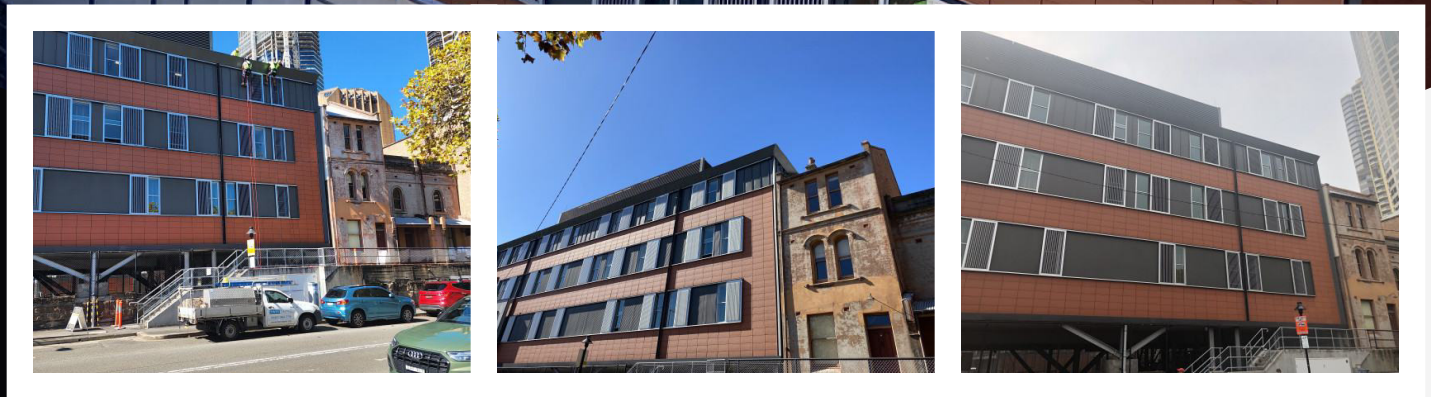
We conducted a thorough dilapidation report, tested external walls for deteriorated cement render, replaced defective render, installed new cement render, cut control joints, repaired rust spalls, applied protective coatings, addressed slab band edge repairs, waterproofed rooftops and tiles, completed an external repaint, and conducted a thorough site clean.



## THE SANDS HOTEL

### Roof Top Waterproofing

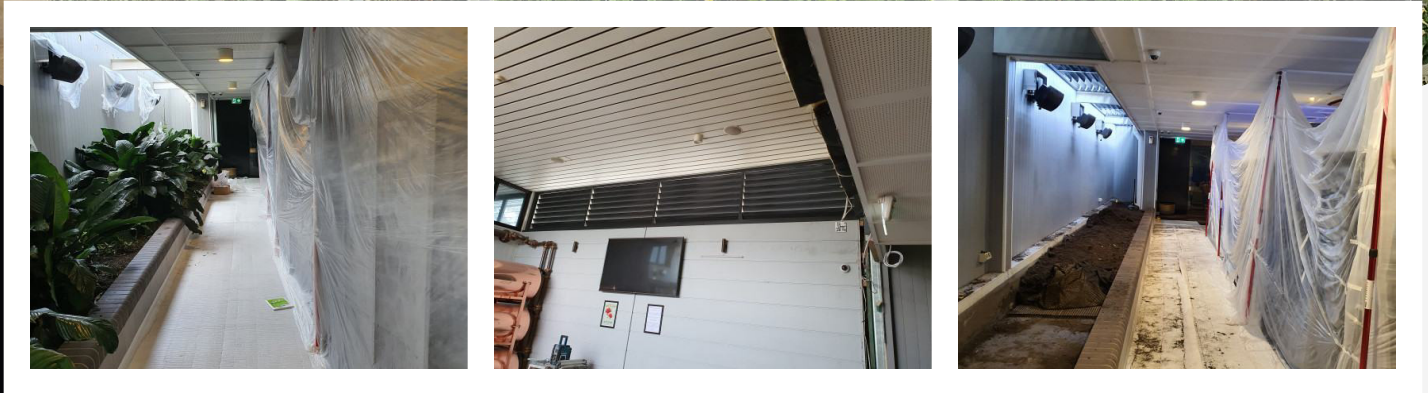
The project involves site establishment, installation of scaffolding, fall prevention fencing, removal of rooftop services, surface grinding, priming, polyurethane waterproofing, new drainage, stone ballast reinstatement, rust treatment, protective coating application, custom ventilation system installation, ducting works, electrical services, site cleaning, compliance assurance, and client handover.



## YHA, THE ROCKS

Fascia Installation & Removal

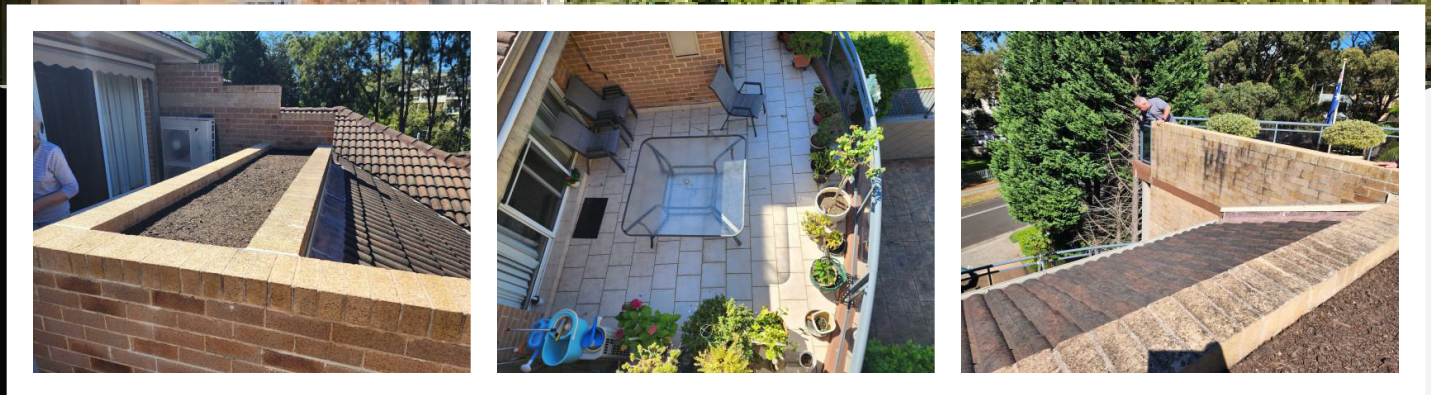
The deteriorating fibre cement fascia facade sheeting was carefully removed, making way for a transformation. In its place, custom colourbond sheeting was installed, adding a personalized touch while ensuring longevity. To complement the new facade, custom flashings were meticulously installed. This comprehensive process not only revitalized the exterior but also fortified it for the future.



## NARELLAN HOTEL GAMING ROOM

### Louver Installation

Supply and installation of custom-made powder-coated louvred awnings, fitting custom powder-coated flashings, internal fit out of the gaming room, complete custom roof coverings for the gaming room, internal and external painting, use of access equipment, and a thorough builders' clean. We enhanced functionality and aesthetics while ensuring durability and cleanliness throughout the building.



## UNIT 6 8-14 MERCER ST

Garden Bed Waterproofing

We provided traffic control, access equipment to complete works, installed floor and wall protection, safety fencing and signage. Our skilled team removed failed render surfaces to upper level floor panels, primes for new render, and expertly applied polymer render. Then painted to ensure a seamless match with existing aesthetics. Our commitment extended to thorough cleaning and decommissioning of the building zone

# GOT A PROBLEM?

# NEED A SOLUTION?

## SPEAK TO OUR BUILDING EXPERTS

Our dedicated team are here to provide you with the right advice. Simply connect with Dynamic via phone, email or our website, and one of our highly qualified builders will be ready to discuss your next project.



**DYNAMIC**  
PROJECT SERVICES

 **0400 452 333**

 **info@dynamiccps.com.au**

 **www.dynamiccps.com.au**